

# INVESTMENT PROJECTS MEDIATED BY IDAL

2003 - 2019

# AGRICULTURE



## NPPC FRESH PRODUCE FACTORY

NPPC is a center for fruit and vegetable packaging established in Taanayel, the Bekaa. The project has a positive impact on the local economy and creates competition with existing packaging centers by applying cost-effective packaging technologies.

It applied to IDAL in 2007.

The project spans on a built up area of 12.88 sqm.



SECTOR	AGRICULTURE
SUB-SECTOR	PACKAGING
INVESTOR'S ORIGIN	KUWAIT
MAJOR SHAREHOLDER(S)	KHALIL EL ABDALLAH NAZIH EL HAJJ CHEHADE RAJI SAJIAN
TYPE OF INVESTMENT	FOREIGN AFFILIATE
LOCATION	BEKAA, ZAHLE, TAANAYEL
ECONOMIC CONTRIBUTION	USD 11.6 MILLION
CONTRIBUTION TO EMPLOYMENT	37
CONTRIBUTION TO INDIRECT EMPLOYMENT	34
STATUS	CLOSED

# AGRO INDUSTRY



## RIVIERA BISCUIT

Riviera Biscuit Company is a new confectionary factory in Bekaa. The company will be manufacturing various kinds of sweets snacks including Chocolate Wafers, biscuits and Cakes through its avant-garde machineries and unique packaging facilities.

It applied to IDAL in 2018 and started operations in 2019.

The project spans on a built up area of 8,797 sqm.



SECTOR  
SUB-SECTOR  
INVESTOR'S ORIGIN  
MAJOR SHAREHOLDER(S)

**AGRO INDUSTRY**  
**FOOD PRODUCTS**  
**LEBANON**  
**DAHER FOODS HOLDING S.A.L**

TYPE OF INVESTMENT  
LOCATION  
ECONOMIC CONTRIBUTION  
CONTRIBUTION TO EMPLOYMENT  
CONTRIBUTION TO INDIRECT EMPLOYMENT  
STATUS

**GREENFIELD**  
**BEKAA, ZAHLE, FORZOL**  
**USD 4 MILLION**  
**61**  
**347**  
**OPERATIONAL**

## GLOBAL SNACKS

Global Snacks is a production plant for “Bread Chips” and “Pretzel Snack” made from flour and all kinds of grains and maize grits toasted in various savory or sweet flavors in different shapes and sizes. In addition, the factory will produce cereal bars made from corn, rice and oat flakes mixed with fruits and chocolate in addition to biscuits and wafers in different sizes and shapes.

It applied to IDAL in 2017 & started operations in 2018.

The project spans over a built up area of 4,104,000sqm.



SECTOR  
SUB-SECTOR  
INVESTOR'S ORIGIN  
MAJOR SHAREHOLDER(S)

**AGRO INDUSTRY  
FOOD PRODUCTS  
LEBANON**

**DAHER INVESTMENT HOLDING SAL - ABDALLAH  
GEORGES DAHER - NADINE ABDO SIDI - SABINE  
ABDALLAH DAHER - GEORGES ABDALLAH DAHER**

TYPE OF INVESTMENT  
LOCATION  
ECONOMIC CONTRIBUTION  
CONTRIBUTION TO EMPLOYMENT  
CONTRIBUTION TO INDIRECT EMPLOYMENT  
STATUS

**GREENFIELD  
BEKAA, ZAHLE, FORZOL  
USD 10 MILLION  
92  
521  
OPERATIONAL**

## WILCO PM

Founded in 1958, Wilco PM specializes in poultry production.

The project is part of Wilco PM's expansion of its poultry production chain to replace the old poultry slaughterhouse. The expansion entails the construction and operation of a new poultry slaughterhouse, processing lines and rendering plant in the Chekka industrial zone, Batroun Caza, North Lebanon.

The capacity of the slaughterhouse will reach around 6,000 chickens per hour. The expansion involves three processed items line: cooked nuggets, partially fried boneless chicken fillet, and canned luncheon meat.

It applied to IDAL in 2015 for an expansion.

The project spans on a built up area of 11,995 sqm.



SECTOR  
SUB-SECTOR  
INVESTOR'S ORIGIN  
MAJOR SHAREHOLDER(S)

**AGRO INDUSTRY**  
**POULTRY PRODUCTION**  
**LEBANON**  
**WILLIAM BOUTROS / JOSEPH BOUTROS**  
**SLEIMAN BOUTROS / TONY BOUTROS**  
**GABY BOUTROS**

TYPE OF INVESTMENT  
LOCATION  
ECONOMIC CONTRIBUTION  
CONTRIBUTION TO EMPLOYMENT  
CONTRIBUTION TO INDIRECT EMPLOYMENT  
STATUS

**EXPANSION**  
**NORTH LEBANON, BATROUN, CHEKKA**  
**USD 11.1 MILLION**  
**58**  
**331**  
**OPERATIONAL**



## HAWA CHICKEN

Founded in 1957, Hawa Chicken is the leading producer of poultry products in Lebanon. In 2015 it expanded its production capacity by establishing a new slaughterhouse to further process poultry products in Anfeh, North Lebanon. The investment project consists of an expansion of the current factory by 61,000 sqm. The project includes a slaughterhouse, a factory for rendering residues, and another factory for manufacturing dry food for dogs. The slaughterhouse is expected to double production capacity to 120,000 chickens per day. Production of dry food for dogs will reach ten tons per day and they plan to export these products to Arab and international markets.

It applied to IDAL in 2015 and started operations in 2016.

The new facilities will stretch over 36,000 sqm of built-up area.



SECTOR  
SUB-SECTOR  
INVESTOR'S ORIGIN  
MAJOR SHAREHOLDER(S)  
  
TYPE OF INVESTMENT  
LOCATION  
ECONOMIC CONTRIBUTION  
CONTRIBUTION TO EMPLOYMENT  
CONTRIBUTION TO INDIRECT EMPLOYMENT  
STATUS

**AGRO INDUSTRY**  
**POULTRY PRODUCTION**  
**LEBANON**

**ANTOINE HAWA / JEAN HAWA / JACK HAWA**  
**SAMIR HAWA / JALAL HAWA / JOWY HAWA**  
**JULIA HAWA / SOFIA HAWA**

**EXPANSION**  
**NORTH LEBANON, KOURA, ANFEH**  
**USD 52.6 MILLION**  
**309**  
**1,761**  
**OPERATIONAL**



## RIFAI ROASTERY - ROASTING & FOOD PROCESSING PLANT

Founded in 1948, it is one of the largest factories of savory snacks in Lebanon.

The company imports nuts and kernels from around the world, then processes and distributes them to retail shops. AlRifai products are exported to various countries. In terms of international expansion, 2006 was a milestone for the company with the establishment of a manufacturing facility in Sweden. Today, the company has over 60 points of sale in Lebanon as well as 6 stores and 160 point of sales across the GCC and the Levant region. The company is planning to enter new markets such as Europe, America and West Asia thus needed to expand its factories and operations to be able to do so.

It applied to IDAL in 2014 and started operations in 2016. The project spans on a built up area of 17,622 sqm.



SECTOR  
SUB-SECTOR  
INVESTOR'S ORIGIN  
MAJOR SHAREHOLDER(S)

**AGRO INDUSTRY**  
**ROASTERY INDUSTRY**  
**LEBANON**  
**AL RIFAI INTERNATIONAL HOLDING**  
**MOHAMAD AL RIFAI**  
**MOUSSA AL RIFAI**

TYPE OF INVESTMENT  
LOCATION  
ECONOMIC CONTRIBUTION  
CONTRIBUTION TO EMPLOYMENT  
CONTRIBUTION TO INDIRECT EMPLOYMENT  
STATUS

**EXPANSION**  
**MOUNT LEBANON, JBEIL, HALAT**  
**USD 4.5 MILLION**  
**97**  
**553**  
**OPERATIONAL**

## LEBANESE ROASTING GROUP "CASTANIA"

Founded in 1985, Castania specializes in the production of mixed roasted nuts and snacks.

Castania is in the process of building a new full functional plant in Hsoun for the manufacturing of mixed nuts and kernels products to support its export sales.

It applied to IDAL in 2014.

The project spans on a built up area of 4,687 sqm.



SECTOR  
SUB-SECTOR  
INVESTOR'S ORIGIN  
MAJOR SHAREHOLDER(S)

**AGRO INDUSTRY**  
**ROASTERY INDUSTRY**  
**LEBANON**  
**ELIAS DANIEL / NICOLE NAJJAR**  
**ROMIE DANIEL / CAROLE DANIEL**  
**PETER DANIEL / ROY DANIEL**

TYPE OF INVESTMENT  
LOCATION  
ECONOMIC CONTRIBUTION  
CONTRIBUTION TO EMPLOYMENT  
CONTRIBUTION TO INDIRECT EMPLOYMENT  
STATUS

**EXPANSION**  
**MOUNT LEBANON, JBEIL, HSOUN**  
**USD 6 MILLION**  
**75**  
**428**  
**OPERATIONAL**

## OMRAN INDUSTRIAL FOOD

It is a Lebanese owned company located in the Bekaa region and specialized in the manufacturing of confectionary; more specifically biscuits, chocolate, wafers, juice, sweets, cake, bakery and the like.

The company serves the local market and is planning on expanding to Arab markets in the near future.

It applied to IDAL in 2012 and started operations in 2014.

The project spans on a built up area of 2,900 sqm.



SECTOR  
SUB-SECTOR  
INVESTOR'S ORIGIN  
MAJOR SHAREHOLDER(S)  
  
TYPE OF INVESTMENT  
LOCATION  
ECONOMIC CONTRIBUTION  
CONTRIBUTION TO EMPLOYMENT  
CONTRIBUTION TO INDIRECT EMPLOYMENT  
STATUS

**AGRO INDUSTRY**  
**FOOD PRODUCTS**  
**LEBANON**  
**ABIR BAMIEH / OSMAN ALAM EL-DINE**  
**HASSAN ALAM EL-DINE**  
**YASMINA ALAM EL-DINE**

**GREENFIELD**  
**BEKAA, ZAHLE**  
**USD 4 MILLION**  
**33**  
**188**  
**OPERATIONAL**

## CEDARS PREMIUM FOOD & BEVERAGE

Former owner of the well-known 'Pampa', this new company is involved in the production and sales of fruit juices, carbonated fruit drinks and dairy products.

It applied to IDAL in 2008 and started operations in 2009.

The project spans on a built up area of 3,377 sqm.



SECTOR  
SUB-SECTOR  
INVESTOR'S ORIGIN  
MAJOR SHAREHOLDER(S)

**AGRO INDUSTRY**  
**FOOD PRODUCTS**  
**LEBANON**  
**HAMIN NAJEM / JOSEPH NAJEM**  
**SANAA YOUNES**  
**NAYLA EL-QOBORSI**

TYPE OF INVESTMENT  
LOCATION  
ECONOMIC CONTRIBUTION  
CONTRIBUTION TO EMPLOYMENT  
CONTRIBUTION TO INDIRECT EMPLOYMENT  
STATUS

**GREENFIELD**  
**NORTH LEBANON, KOURA, ZAKROUN**  
**USD 14.4 MILLION**  
**81**  
**462**  
**OPERATIONAL**



## DAHAR FOODS - MASTER CHIPS

Master Potato Chips was established with the assistance of IDAL in 2005.

The company has greatly expanded ever since, and now not only produces potato chips for the local market but for foreign destinations as well. In 2009, the enterprise expanded its operations into frozen fries and, again with the assistance of IDAL, was able to branch out into the Master Fried Potatoes.

The new project consists of 2 Factories: one for the production of potato chips, corn chips and tortilla and one for the production of pasta.

The project spans over a built up area of 17,000 sqm.



SECTOR	<b>AGRO INDUSTRY</b>
SUB-SECTOR	<b>FOOD PRODUCTS</b>
INVESTOR'S ORIGIN	<b>LEBANON</b>
MAJOR SHAREHOLDER(S)	<b>MICHEL DAHER</b>
TYPE OF INVESTMENT	<b>GREENFIELD</b>
LOCATION	<b>BEKAA, ZAHLE, FERZOL</b>
ECONOMIC CONTRIBUTION	<b>USD 16.7 MILLION</b>
CONTRIBUTION TO EMPLOYMENT	<b>157</b>
CONTRIBUTION TO INDIRECT EMPLOYMENT	<b>895</b>
STATUS	<b>OPERATIONAL</b>

## DAHER FOODS - CORNFLAKES

From its humble beginnings in the Lebanese Bekaa Valley, Daher Foods has grown since 1992 to cater its set leading brands to most of the Middle East and North Africa. Today Daher Foods operates some of the largest and state-of-the-art production facilities and direct distribution networks in the region, with a team of farmers, packers, processors and employees who pledge to consistently provide the highest quality products to consumers everywhere. The new project aims to produce breakfast cereals & corn flakes of various kinds and flavors, in addition to varieties of food products made of wheat, corn, rice and oat.

It applied to IDAL in 2004 and started operations in 2006.

The project spans on a built up area of 45,000sqm.

This project benefited from Investment Law 360 and completed the 10 years exemptions.



SECTOR  
SUB-SECTOR  
INVESTOR'S ORIGIN  
MAJOR SHAREHOLDER(S)

**AGRO INDUSTRY**  
**FOOD PRODUCTS**  
**LEBANON**  
**MICHEL DAHER**  
**ABDALLAH DAHER**  
**MARLENE SAYDEH**

TYPE OF INVESTMENT  
LOCATION  
ECONOMIC CONTRIBUTION  
CONTRIBUTION TO EMPLOYMENT  
CONTRIBUTION TO INDIRECT EMPLOYMENT  
STATUS

**GREENFIELD**  
**BEKAA, WESTERN BEKAA, MANSOURA**  
**USD 17.6 MILLION**  
**259**  
**1476**  
**OPERATIONAL**



# INDUSTRY



## PROPACK

Propack will manufacture flexible plastic packaging and labels for agro-food products, detergents and sanitary products. The intended final product will range from simple plastic shopping bags to more complex composite packaging for milk jugs, detergents bottles, and frozen food

It applied to IDAL in 2018.

The project spans on a built up area of 4,627 sqm.



SECTOR  
SUB-SECTOR  
INVESTOR'S ORIGIN  
MAJOR SHAREHOLDER(S)

**INDUSTRY**  
**RUBBER & PLASTIC**  
**LEBANON**  
**EDWAR ASSAD KHOULY**  
**MYRIAM HOLDING**  
**JOSEPH HENRY JOUEID**  
**JOUD HENRY JOUEID**

TYPE OF INVESTMENT  
LOCATION  
ECONOMIC CONTRIBUTION  
CONTRIBUTION TO EMPLOYMENT  
CONTRIBUTION TO INDIRECT EMPLOYMENT  
STATUS

**GREENFIELD**  
**FERZOL, ZAHLE, BEKAA**  
**USD 5.3 MILLION**  
**25**  
**73**  
**OPERATIONAL**

## GLASSPACK

Glasspack is a newly established company that produces glass bottles and jars. It aims to fill the void in the local production as the market relies mostly on imports. Glass production will exceed 60,000 tons of glass per year, including transparent and green glass. The manufactured glass will be sold for producers of soft drinks, beer, wine, oil, and vinegar, as well as for the agro-food industries.

Glasspack is set to export around 25 percent of its production to Arab countries.

It applied to IDAL in 2016.

The project spans on a built up area of 13,512 sqm.



SECTOR  
SUB-SECTOR  
INVESTOR'S ORIGIN  
MAJOR SHAREHOLDER(S)  
  
TYPE OF INVESTMENT  
LOCATION  
ECONOMIC CONTRIBUTION  
CONTRIBUTION TO EMPLOYMENT  
CONTRIBUTION TO INDIRECT EMPLOYMENT  
STATUS

**INDUSTRY**  
**NON-METALLIC MINERAL PRODUCTS**  
**LEBANON**  
**ABDALLAH RIZK**  
**GABY BRAIDY**  
**MAGHDA BRAIDY**

**GREENFIELD**  
**BEKAA, ZAHLE, TAANAYEL**  
**USD 43 MILLION**  
**114**  
**331**  
**UNDER EXECUTION**

## GENERAL PAINT CO.

General Paint Co. -GPC- was established in 1959. It is one of the fastest growing producers of car paints and ancillaries for the refinish industry.

Throughout the years, GPC has worked under a license agreement from multinationals such as Glidden Paints (U.S.A) and Valentine (France). Today, the company is operating on an independent basis and is selling its products in over 53 countries.

It applied to IDAL in 2015.

The new facilities will stretch over 12,556 sqm of built-up area.



SECTOR  
SUB-SECTOR  
INVESTOR'S ORIGIN  
MAJOR SHAREHOLDER(S)

**INDUSTRY**  
**CHEMICALS**  
**LEBANON**  
**JOHNNY CORM / PIERRE CORM**  
**MARIE TAYYAN**  
**JEAN-MARIE DOUAIHY**

TYPE OF INVESTMENT  
LOCATION  
ECONOMIC CONTRIBUTION  
CONTRIBUTION TO EMPLOYMENT  
CONTRIBUTION TO INDIRECT EMPLOYMENT  
STATUS

**EXPANSION**  
**MOUNT LEBANON, KESRWAN, GHAZIR**  
**USD 8 MILLION**  
**50**  
**145**  
**OPERATIONAL**

## DALAL STEEL

Established in 1992, DSI Dalal specializes in manufacturing and supplying custom engineered metal building systems and pre-fabricated houses for commercial, industrial, and other specialty applications. It decided to inject a new investment towards the implementation of a new expansion plan.

The expansion project introduces a new automated assembly container line (to produce ISO containers) and will increase the production capacity of prefabs units, steel buildings and polyurethane panels (sandwich panels).

It applied to IDAL in 2013 for an expansion.

The project spans on a built up area of 22,276 sqm.



SECTOR  
SUB-SECTOR  
INVESTOR'S ORIGIN  
MAJOR SHAREHOLDER(S)  
  
TYPE OF INVESTMENT  
LOCATION  
ECONOMIC CONTRIBUTION  
CONTRIBUTION TO EMPLOYMENT  
CONTRIBUTION TO INDIRECT EMPLOYMENT  
STATUS

**INDUSTRY**  
**METAL PRODUCTS**  
**LEBANON**  
**TOUFIC DALAL / CHADIA DALAL**  
**MARWAN DALAL / RIMA DALAL**  
**RANA DALAL**

**EXPANSION**  
**BEKAA, ZAHLE, TAANAYEL**  
**USD 9 MILLION**  
**42**  
**122**  
**OPERATIONAL**



## PHARMALINE

A Lebanese pharmaceutical company, Pharmaline is a member of Malia Group. Focusing on producing wide ranging branded generics at its expansive factory just north of Beirut; Pharmaline is also the trusted licensee of multinational brands including Abbott, Aegis, GlaxoSmithKline, Merck Serono, Novartis, Phadisco, Pierre Fabre, Swisse, and Tripharma.

Pharmaline has been awarded two ISO certificates: 9001 for quality management system and 14001 for environmental management system.

It exports to countries throughout the Middle East, GCC, North Africa, Europe and Russia.

It applied to IDAL in 2012 and started operations in 2014. The project spans on a built up area of 7,780 sqm.



SECTOR  
SUB-SECTOR  
INVESTOR'S ORIGIN  
MAJOR SHAREHOLDER(S)  
  
TYPE OF INVESTMENT  
LOCATION  
ECONOMIC CONTRIBUTION  
CONTRIBUTION TO EMPLOYMENT  
CONTRIBUTION TO INDIRECT EMPLOYMENT  
STATUS

**INDUSTRY**  
**PHARMACEUTICAL PRODUCTS**  
**LEBANON**  
**MALIA HOLDING**

**EXPANSION**  
**MOUNT LEBANON, JBEIL**  
**USD 16.4 MILLION**  
**159**  
**461**  
**OPERATIONAL**



## ADVANCED PLASTICS INDUSTRY (API)

Established in 1994, Advanced Plastic Industries (API) is expanding its current production due to high market demand for pipelines.

The expansion will take place in two phases; the first phase will involve renovating the current occupied location and buying new machinery for the existing products, and the second phase will consist of buying other needed machinery for new products.

It applied to IDAL in 2014 for an expansion.

The project spans on a built up area of 8,800 sqm.



SECTOR  
SUB-SECTOR  
INVESTOR'S ORIGIN  
MAJOR SHAREHOLDER(S)

**INDUSTRY**  
**RUBBERS & PLASTICS**  
**LEBANON**  
**GABY ABOU CHEDID**  
**ELIE ABOU CHEDID**  
**CHARBEL ABOU CHEDID**

TYPE OF INVESTMENT  
LOCATION  
ECONOMIC CONTRIBUTION  
CONTRIBUTION TO EMPLOYMENT  
CONTRIBUTION TO INDIRECT EMPLOYMENT  
STATUS

**EXPANSION**  
**MOUNT LEBANON, JOUNIEH**  
**USD 21.3 MILLION**  
**30**  
**87**  
**OPERATIONAL**

## PHARMA M

Pharma M was established in 2006. Pharma M is specialized in the production of high quality pharmaceuticals classified as dietary supplements.

The company produces supplements such as vitamins, minerals, and amino acids. It is the only company in Lebanon and the Middle-East, and boasting an R&D team that is developing the most innovative products on the market.

It applied to IDAL in 2012 and started operations in the same year.

The project spans on a built up area of 853 sqm.



SECTOR  
SUB-SECTOR  
INVESTOR'S ORIGIN  
MAJOR SHAREHOLDER(S)  
  
TYPE OF INVESTMENT  
LOCATION  
ECONOMIC CONTRIBUTION  
CONTRIBUTION TO EMPLOYMENT  
CONTRIBUTION TO INDIRECT EMPLOYMENT  
STATUS

**INDUSTRY**  
**PHARMACEUTICAL PRODUCTS**  
**LEBANON**  
**JIHAD MALEK / REINE MALEK**  
**MARWAN MALEK**  
**LAMA MALEK**

**GREENFIELD**  
**MOUNT LEBANON, METN, BRUMMANA**  
**USD 1.2 MILLION**  
**17**  
**50**  
**OPERATIONAL**

## ALGORITHM

Algorithm is a pharmaceutical manufacturer with product lines including non-sterile liquids, creams and ointments, suppositories, oral suspensions, in addition to other products under license.

It applied to IDAL in 2010 for an expansion.

The project spans on a built up area of 12,000 sqm.



SECTOR  
SUB-SECTOR  
INVESTOR'S ORIGIN  
MAJOR SHAREHOLDER(S)  
  
TYPE OF INVESTMENT  
LOCATION  
ECONOMIC CONTRIBUTION  
CONTRIBUTION TO EMPLOYMENT  
CONTRIBUTION TO INDIRECT EMPLOYMENT  
STATUS

**INDUSTRY**  
**PHARMACEUTICAL PRODUCTS**  
**LEBANON**  
**SALIM GHORAYEB / NABIL GHORAYEB**  
**FADI GHORAYEB**  
**MONA GHORAYEB**

**EXPANSION**  
**MOUNT LEBANON, ZIKRIT**  
**USD 12.3 MILLION**  
**100**  
**290**  
**OPERATIONAL**

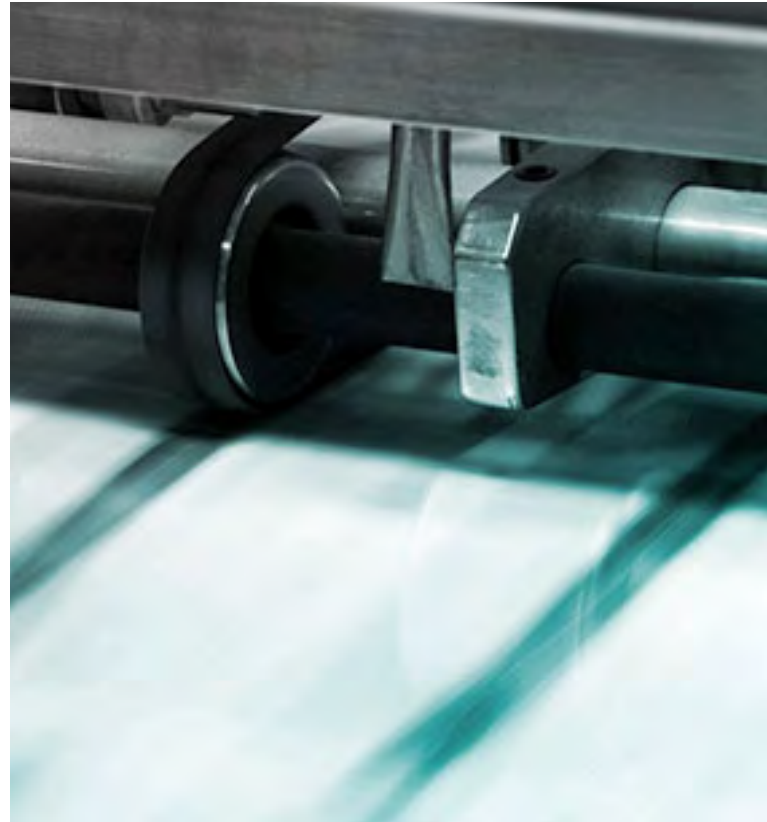
## ADVANCED SECURITY PRINTING SOLUTIONS

The company consists of producing secure printed documents for official uses, such as passports, ID cards, ballot papers, etc.

It is one of its kind in Lebanon and the region and puts Lebanon on the map of digital printing solutions.

It applied to IDAL in 2010 for an expansion.

The project spans on a built up area of 13,446 sqm.



SECTOR  
SUB-SECTOR  
INVESTOR'S ORIGIN  
MAJOR SHAREHOLDER(S)

**INDUSTRY**  
**PAPER PRODUCTS/ PACKAGING**  
**LEBANON**  
**INKRIPT HOLDING S.A.L**  
**RIAD MOHAMAD AL AMIN ITANI**  
**DANI NEMR EID / YASSAR ADEL NASSER**

TYPE OF INVESTMENT  
LOCATION  
ECONOMIC CONTRIBUTION  
CONTRIBUTION TO EMPLOYMENT  
CONTRIBUTION TO INDIRECT EMPLOYMENT  
STATUS

**EXPANSION**  
**MOUNT LEBANON, ALEY, BCHAMOUN**  
**USD 11.3 MILLION**  
**102**  
**296**  
**OPERATIONAL**

## ARWAN PHARMACEUTICALS INDUSTRIES

Arwan Pharmaceutical Industries, are one of the most advanced biotech manufacturing facilities in the MENA region and Africa.

They develop and manufacture critical care products, focusing on new generation anti-infectives, hematinics, anesthetics and analgesics, gastrointestinals, oncology, antiasthmatics, cardiovasculars, osteoporosis and wound management modalities.

It applied to IDAL in 2010 and started operations in 2013.

The project spans on a built up area of 19,350 sqm.



SECTOR	<b>INDUSTRY</b>
SUB-SECTOR	<b>PHARMACEUTICAL PRODUCTS</b>
INVESTOR'S ORIGIN	<b>LEBANON - UAE</b>
MAJOR SHAREHOLDER(S)	<b>ABD EL RAZAK ABDALLAH RUWEIDA DAHAM RAMI NAJEM</b>
TYPE OF INVESTMENT	<b>FOREIGN AFFILIATE</b>
LOCATION	<b>MOUNT LEBANON, CHOUF, JADRA</b>
ECONOMIC CONTRIBUTION	<b>USD 35.4 MILLION</b>
CONTRIBUTION TO EMPLOYMENT	<b>90</b>
CONTRIBUTION TO INDIRECT EMPLOYMENT	<b>261</b>
STATUS	<b>OPERATIONAL</b>



## MATELEC

Founded in 1974, the company specializes in electrical distribution.

It planned on expanding the company's industrial facilities in Jbeil, Mount Lebanon by increasing the quantity of electrical distribution, power transformers, pre-fabricated package substations, medium voltage switchgears, and low voltage panels available for the local market.

It applied to IDAL in 2010 and started operations in 2011.

The project spans on a built up area of 15,300 sqm.



SECTOR  
SUB-SECTOR  
INVESTOR'S ORIGIN  
MAJOR SHAREHOLDER(S)

**INDUSTRY**  
**ELECTRICAL MACHINERY & APPLIANCES**  
**LEBANON**  
**ELIAS DOUMET / GEORGE DOUMET**  
**ANTOINE DOUMET / MITRI DOUMET**  
**MARK DOUMET**

TYPE OF INVESTMENT  
LOCATION  
ECONOMIC CONTRIBUTION  
CONTRIBUTION TO EMPLOYMENT  
CONTRIBUTION TO INDIRECT EMPLOYMENT  
STATUS

**EXPANSION**  
**MOUNT LEBANON, JBEIL**  
**USD 35.5 MILLION**  
**576**  
**1,615**  
**OPERATIONAL**



## BENTA PHARMA INDUSTRIES

Benta specializes in the manufacturing, representation and distribution of pharmaceutical products as well as medical devices.

Benta supplies both the Lebanese and Middle Eastern markets.

It applied to IDAL in 2004 and started operations in 2007.

The project spans on a built up area of 1,150 sqm.



SECTOR  
SUB-SECTOR  
INVESTOR'S ORIGIN  
MAJOR SHAREHOLDER(S)

**INDUSTRY**  
**PHARMACEUTICAL PRODUCTS**  
**LEBANON**  
**BERNARD TANNOURY**  
**ALBERT TANNOURY**  
**NAJI TANNOURY**

TYPE OF INVESTMENT  
LOCATION  
ECONOMIC CONTRIBUTION  
CONTRIBUTION TO EMPLOYMENT  
CONTRIBUTION TO INDIRECT EMPLOYMENT  
STATUS

**GREENFIELD**  
**MOUNT LEBANON, DBAYEH**  
**USD 30.5 MILLION**  
**189**  
**548**  
**OPERATIONAL**

## UTRIX

UTRIX produces, sells and exports veterinary drugs. The facility has a potentially important economic impact on animal farming in Lebanon by providing locally manufactured drugs of comparative quality to higher-priced important products.

It applied to IDAL in 2007 and started operations in 2015.

The project spans over a built up area of 20,222 sqm.



SECTOR  
SUB-SECTOR  
INVESTOR'S ORIGIN  
MAJOR SHAREHOLDER(S)

**INDUSTRY**  
**PHARMACEUTICAL PRODUCTS**  
**LEBANON**  
**RAYMOND GEORGES DAHER**  
**CLAUDINE SLEIMAN BREIDY**  
**NICOLAS MOUFID MAALOUF**

TYPE OF INVESTMENT  
LOCATION  
ECONOMIC CONTRIBUTION  
CONTRIBUTION TO EMPLOYMENT  
CONTRIBUTION TO INDIRECT EMPLOYMENT  
STATUS

**GREENFIELD**  
**BEKAA, ZAHLE, HAOUCH EL-OUNARA**  
**USD 18.7 MILLION**  
**27**  
**78**  
**OPERATIONAL**

## KFOURY METALS

This project is a steel production plant. It consists in setting up a steel melt shop with a capacity of 125,000 tons per year to produce steel billets, a steel rolling mill to produce rebars and a maritime port to facilitate the import of raw material.

It applied to IDAL in 2010 and started operations in 2013.

The project spans on a built up area of 12,000 sqm.



SECTOR  
SUB-SECTOR  
INVESTOR'S ORIGIN  
MAJOR SHAREHOLDER(S)

**INDUSTRY**  
**METAL PRODUCTS**  
**LEBANON**  
**ISKANDAR KFOURY / ANTOINE KFOURY**  
**ALEC KFOURY / GEORGES KFOURY**  
**IBRAHIM KFOURY / ALEXANDRE KFOURY**

TYPE OF INVESTMENT  
LOCATION  
ECONOMIC CONTRIBUTION  
CONTRIBUTION TO EMPLOYMENT  
CONTRIBUTION TO INDIRECT EMPLOYMENT  
STATUS

**GREENFIELD**  
**NORTH LEBANON, BATROUN, SELAATA**  
**USD 66.7 MILLION**  
**10**  
**29**  
**OPERATIONAL**

## KILN UPGRADE, NEW CEMENT MILL & SILOS

Cimenterie Nationale was founded in 1953 by the Doumet and Assaily families, and is today one of the regional leading cement producers. In addition to being an industry leader on the Lebanese market, the company is also a prominent worldwide cement exporter, serving the Levant, Africa and occasionally Europe. The expansion project involved the upgrade of a kiln to almost double capacity while adding a crusher-dryer plant, extending a clinker cooler, and replacing the exhaust system. Storage capacity was increased by 40,000 tons, and automatic bag loading machines were installed.

It applied to IDAL in 2006 and started operations in 2009. The project spans on a built up area of 116,915 sqm.

This project benefited from Investment Law 360 and completed the 10 years exemptions.



SECTOR  
SUB-SECTOR  
INVESTOR'S ORIGIN  
MAJOR SHAREHOLDER(S)

**INDUSTRY**  
**CHEMICALS**  
**LEBANON**  
**ASSAILY FAMILY / DOUMIT FAMILY**  
**EDDE FAMILY / RENE DAGHER**  
**NADA FAYAD / PAULA RBEIZ**

TYPE OF INVESTMENT  
LOCATION  
ECONOMIC CONTRIBUTION  
CONTRIBUTION TO EMPLOYMENT  
CONTRIBUTION TO INDIRECT EMPLOYMENT  
STATUS

**GREENFIELD**  
**NORTH LEBANON, BATROUN, CHEKKA**  
**USD 127.5 MILLION**  
**56**  
**162**  
**OPERATIONAL**



## 3WF

The project consists in developing a new factory which produces a new welded wire mesh product called 3 WF (waved welded wire fabric). This new fence product is based on new state of the art technology, which opens the door for an unlimited number of mesh patterns eliminating the passive and boring squares of the traditional wire mesh.

It applied to IDAL in 2006.

The project spans on a built up area of 4,800 sqm.



SECTOR  
SUB-SECTOR  
INVESTOR'S ORIGIN  
MAJOR SHAREHOLDER(S)  
  
TYPE OF INVESTMENT  
LOCATION  
ECONOMIC CONTRIBUTION  
CONTRIBUTION TO EMPLOYMENT  
CONTRIBUTION TO INDIRECT EMPLOYMENT  
STATUS

**INDUSTRY**  
**METALS, MACHINERY AND EQUIPMENT**  
**LEBANON**  
**CENTURY FENCE HOLDING S.A.L.**

**GREENFIELD**  
**MOUNT LEBANON, CHOUEF, MGHAYRIE**  
**USD 1 MILLION**  
**41**  
**119**  
**CLOSED**

## HOME APPLIANCES FACTORY

Situated in the Northern Caza of Akkar, this project assembles and produces electric and household appliances.

It applied to IDAL in 2005 and started operations in 2006.

The project spans on a built up area of 3,342 sqm.

This project benefited from Investment Law 360 and completed the 10 years exemptions.



SECTOR  
SUB-SECTOR  
INVESTOR'S ORIGIN  
MAJOR SHAREHOLDER(S)

**INDUSTRY**  
**ELECTRICAL MACHINERY & APPLIANCES**  
**LEBANON**  
**MOHAMAD SLEIMAN / AHMAD SLEIMAN**  
**MOHAMAD EL MOSTAFA**  
**MOTHEB EL MUSTAFA**

TYPE OF INVESTMENT  
LOCATION  
ECONOMIC CONTRIBUTION  
CONTRIBUTION TO EMPLOYMENT  
CONTRIBUTION TO INDIRECT EMPLOYMENT  
STATUS

**GREENFIELD**  
**NORTH LEBANON, AKKAR, SAMMOUNIEH**  
**USD 2.7 MILLION**  
**20**  
**58**  
**OPERATIONAL**



## CEDARS FOR TEXTILES

The project aims at developing a new factory for producing different types of polyester used in all types of textile industries, clothing and curtains.

It applied to IDAL in 2004.

The project spans on a built up area of 2,406 sqm.



SECTOR  
SUB-SECTOR  
INVESTOR'S ORIGIN  
MAJOR SHAREHOLDER(S)

**INDUSTRY**  
**TEXTILES**  
**SYRIA**  
**MELHEM MITHKAL / MOHAMMAD HABBAL**  
**MOHAMAD CHBIB / MAZEN CHEBLI**  
**MOHAMAD YABROUDI**

TYPE OF INVESTMENT  
LOCATION  
ECONOMIC CONTRIBUTION  
CONTRIBUTION TO EMPLOYMENT  
CONTRIBUTION TO INDIRECT EMPLOYMENT  
STATUS

**GREENFIELD**  
**WEST BEKAA, MANARA**  
**USD 1 MILLION**  
**25**  
**72**  
**CLOSED**

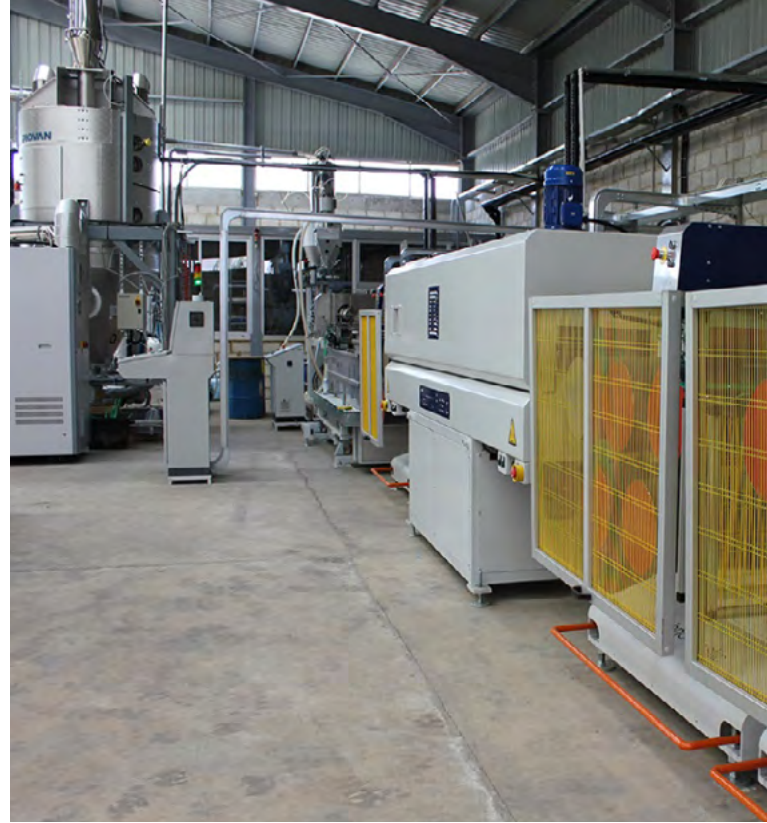
## LEFICO

LEFICO is a Lebanese fiber company established in 2004 in the Bekaa Valley. It is the first PET Polyester Staple Fiber producer in the Middle East.

It applied to IDAL in 2003 and started operations in 2004.

The project spans on a built up area of 4,821 sqm.

This project benefited from Investment Law 360 and completed the 10 years exemptions.



SECTOR	<b>INDUSTRY</b>
SUB-SECTOR	<b>TEXTILES</b>
INVESTOR'S ORIGIN	<b>LEBANON</b>
MAJOR SHAREHOLDER(S)	<b>AHMAD HALBAWI</b>
TYPE OF INVESTMENT	<b>GREENFIELD</b>
LOCATION	<b>BEKAA, BAALBEK</b>
ECONOMIC CONTRIBUTION	<b>USD 4.4 MILLION</b>
CONTRIBUTION TO EMPLOYMENT	<b>62</b>
CONTRIBUTION TO INDIRECT EMPLOYMENT	<b>180</b>
STATUS	<b>OPERATIONAL</b>

# INFORMATION TECHNOLOGY



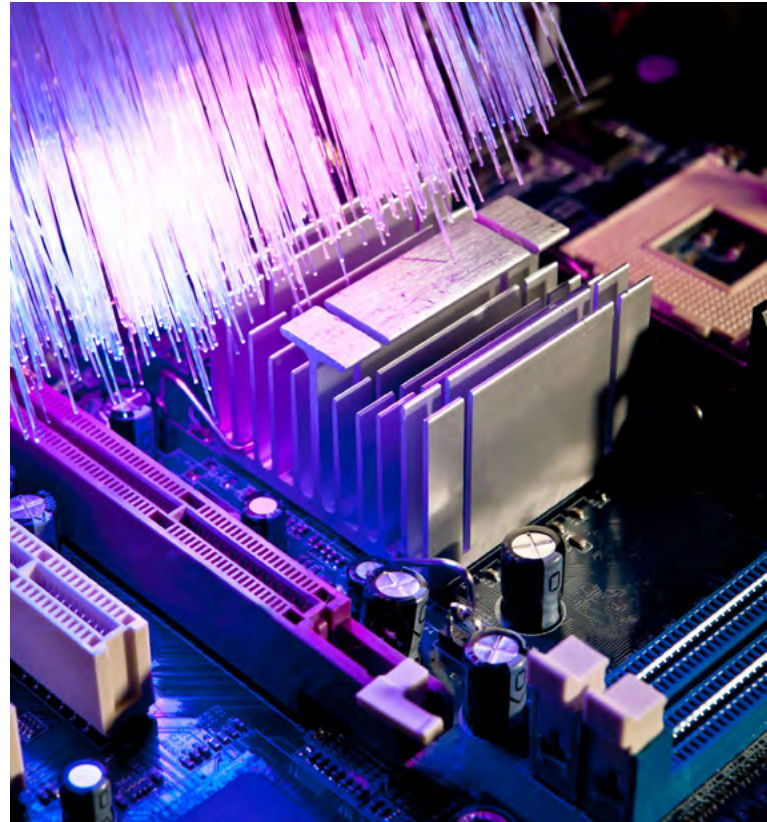
## LOGOS

Logos is a leading regional information technology and enterprise solution provider. Logos, with head offices in Beirut, Lebanon, was established in 1993.

The company provides several software solution products and services in the banking, university, money transfer, and utility sectors, as well as general purpose financial and human resources solutions that can be used in any industry.

Logos is an official ORACLE© distributor in Lebanon on all technology platforms and OLIB7 (a Library Management Information System) distributor in the Arab Countries. Logos offers its state-of-the-art solutions directly and through partners in the Arab world.

It applied to IDAL in 2013 for an expansion.



SECTOR  
SUB-SECTOR  
INVESTOR'S ORIGIN  
MAJOR SHAREHOLDER(S)

**INFORMATION TECHNOLOGY**  
**SOFTWARE DEVELOPMENT**  
**LEBANON**  
**WADIH JUREIDINI**  
**FARES JUREIDINI**  
**ZOYA JUREIDINI**

TYPE OF INVESTMENT  
LOCATION  
ECONOMIC CONTRIBUTION  
CONTRIBUTION TO EMPLOYMENT  
CONTRIBUTION TO INDIRECT EMPLOYMENT  
STATUS

**EXPANSION**  
**BEIRUT**  
**USD 279 THOUSAND**  
**32**  
**80**  
**OPERATIONAL**

## NEUMANN

Implify, Inc is a Global IT Solutions and services firm. Since its inception, Implify, Inc has been providing best-quality and cost-effective IT solutions to fortune 1000 companies, mid-range companies and upcoming companies via its onsite, offshore and in-house service models.

IMPLIFY has developed, Neumann, a Data Platform as a Service, that helps organizations aggregate, visualize, analyze and get the behavior of their data.

It applied to IDAL in 2016 and started operations in 2017



SECTOR  
SUB-SECTOR  
INVESTOR'S ORIGIN  
MAJOR SHAREHOLDER(S)

**INFORMATION TECHNOLOGY**  
**SOFTWARE DEVELOPMENT**  
**LEBANON**  
**ROXANA HOLDING**  
**IMPACT FOUND**  
**PIERRE TAGER**

TYPE OF INVESTMENT  
LOCATION  
ECONOMIC CONTRIBUTION  
CONTRIBUTION TO EMPLOYMENT  
CONTRIBUTION TO INDIRECT EMPLOYMENT  
STATUS

**NEW**  
**NORTH LEBANON**  
**USD 227 THOUSAND**  
**20**  
**50**  
**OPERATIONAL**



## WAVES

Mada Communications, a Kuwaiti communications company active in both Kuwaiti and Jordanian markets, launched Waves S.A.L, the locally registered company that will be managing Mada services and provide DSP services.

Waves introduced the Mobile Broadband Wireless Access System (MBWA), a breakthrough IP-centric wireless architecture designed to affordably extend the broadband internet experience to wherever people are based on the mobile WiMAX technology.

It applied to IDAL in 2010 and started operations in 2013.



SECTOR  
SUB-SECTOR  
INVESTOR'S ORIGIN  
MAJOR SHAREHOLDER(S)

**INFORMATION TECHNOLOGY**  
**NETWORK SERVICES**  
**LEBANON - KUWAIT**  
**CONNEXIONS HOLDING**  
**MADA COMMUNICATIONS**  
**MICHEL DAHER / RAYMOND DAHER**

TYPE OF INVESTMENT  
LOCATION  
ECONOMIC CONTRIBUTION  
CONTRIBUTION TO EMPLOYMENT  
CONTRIBUTION TO INDIRECT EMPLOYMENT  
STATUS

**GREENFIELD**  
**MOUNT LEBANON, MATN, JDEIDEH**  
**USD 12.4 MILLION**  
**53**  
**132**  
**OPERATIONAL**

## NAVIGATE LEBANON

The company was founded in the US in 2006 by 3 ambitious Lebanese engineers who were educated and worked in the US for many years.

The company moved to Lebanon in 2008 under the name of NavLeb S.A.L. The Lebanese company became specialized in map development, GPS Navigation, GPS Tracking and Fleet Management Systems, Online Services and GIS Services. Through local partners, the company offers its Fleet Management services to customers in the Levant, GCC and Africa markets.

Today, Navleb is recognized as one of the leading GPS tracking system companies in Lebanon.

It applied to IDAL in 2008 and started operations in 2009.



SECTOR  
SUB-SECTOR  
INVESTOR'S ORIGIN  
MAJOR SHAREHOLDER(S)

**INFORMATION TECHNOLOGY**  
**SOFTWARE DEVELOPMENT**  
**LEBANON**  
**JOSEPH HAGE / YOUSSEF EL-GHOUR**  
**MAZEN KAEDBYE**  
**ANTOINE HAGE**

TYPE OF INVESTMENT  
LOCATION  
ECONOMIC CONTRIBUTION  
CONTRIBUTION TO EMPLOYMENT  
CONTRIBUTION TO INDIRECT EMPLOYMENT  
STATUS

**GREENFIELD**  
**MOUNT LEBANON, HAZMIEH**  
**USD 367 THOUSAND**  
**19**  
**47**  
**OPERATIONAL**

**MEDIA**



## FRONT D'OR

This investment project, located in Beirut, will serve as the provider of exclusive post-production services. It will contribute to the development of a regional hub for all media, music production companies, and television directors.

It applied to IDAL in 2010.

The project spans on a built up area of 1,754 sqm.



SECTOR  
SUB-SECTOR  
INVESTOR'S ORIGIN  
MAJOR SHAREHOLDER(S)

**MEDIA**  
**PRODUCTION FACILITIES**  
**LEBANON**  
**SAID HASSAN EL MARROUK**  
**HOUSSAM ABD EL RAHMAN MNEIMNEH**  
**RABAB MAAROUF ATWI**

TYPE OF INVESTMENT  
LOCATION  
ECONOMIC CONTRIBUTION  
CONTRIBUTION TO EMPLOYMENT  
CONTRIBUTION TO INDIRECT EMPLOYMENT  
STATUS

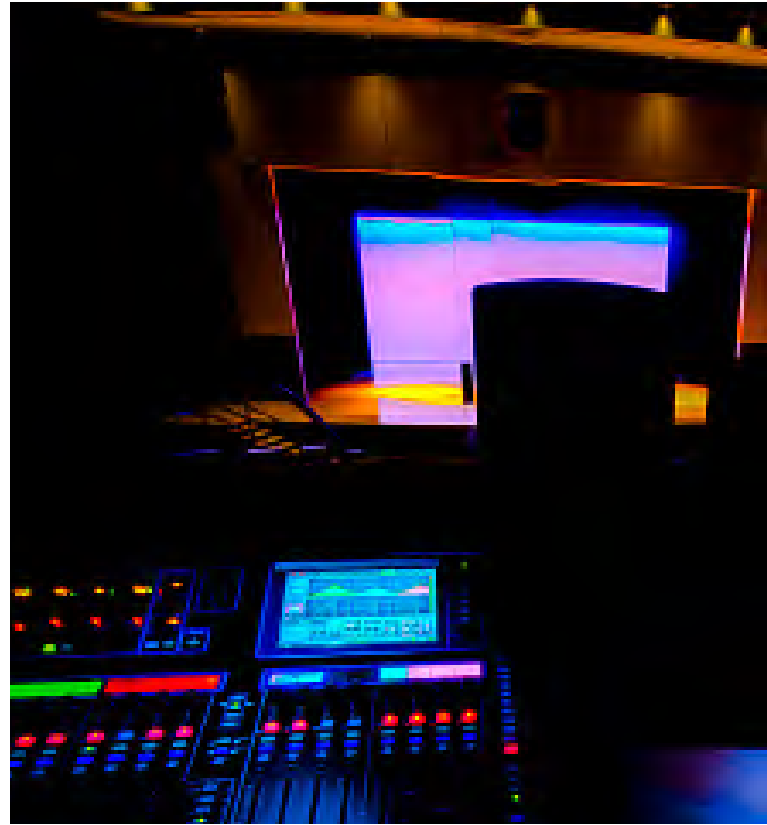
**GREENFIELD**  
**BEIRUT**  
**USD 4 MILLION**  
**25**  
**62**  
**CLOSED**

## VTR BEIRUT POST PRODUCTION FACILITIES

This facility specializes in video teleciné, editing and special effects. The project is located in Beirut.

It applied to IDAL in 2003.

The project spans on a built up area of 1,100 sqm.



SECTOR  
SUB-SECTOR  
INVESTOR'S ORIGIN  
MAJOR SHAREHOLDER(S)

**MEDIA  
PRODUCTION FACILITIES  
UK - LEBANON  
IMI HOLDING  
VTR PLC.**

TYPE OF INVESTMENT  
LOCATION  
ECONOMIC CONTRIBUTION  
CONTRIBUTION TO EMPLOYMENT  
CONTRIBUTION TO INDIRECT EMPLOYMENT  
STATUS

**FOREIGN AFFILIATE  
BEIRUT  
USD 5.4 MILLION  
33  
82  
CLOSED**



# TECHNOLOGY



## HTP

HTP will be offering interconnect test products, and will be producing high performance cables and connectors for data centers. The main customers are Cisco, Google, Juniper, Alcatel, and Intel.

The project is a new concept in Lebanon and Middle East.

It applied to IDAL in 2016 and started operations in 2018.



SECTOR  
SUB-SECTOR  
INVESTOR'S ORIGIN  
MAJOR SHAREHOLDER(S)

**TECHNOLOGY**  
**ELECTRONIC, TELECOM & IT MACHINERY & APPLIANCES**  
**LEBANON**  
**FADI DAOU**  
**WALID HANNA**  
**PAUL EID**  
**RANDA ZIADEH**

TYPE OF INVESTMENT  
LOCATION  
ECONOMIC CONTRIBUTION  
CONTRIBUTION TO EMPLOYMENT  
CONTRIBUTION TO INDIRECT EMPLOYMENT  
STATUS

**NEW**  
**MOUNT LEBANON, ALEY, HOUMAL**  
**USD 1.43 MILLION**  
**41**  
**66**  
**OPERATIONAL**

## CYNOPROD

Cynoprod Lebanon operates a state of the art production center utilizing the latest technology in CAD/CAM dental solutions, going from 3D laser scanning through high-tech CAD software to high speed dental milling. Cynoprod technology is compatible with all material available in the dental market, and is linked through an advanced IT infrastructure – the Extended Manufacturing and Management System (XMS). It specializes in zirconia, metal, and frameworks through milling and digital casting.

It applied to IDAL in 2010.



SECTOR  
SUB-SECTOR  
INVESTOR'S ORIGIN  
MAJOR SHAREHOLDER(S)

**TECHNOLOGY**  
**MEDICAL MACHINERY**  
**CANADA**  
**Wael Adhami**  
**CYNOPROD HOLDING**  
**Dania BAAJOUR**  
**Bassem GHANEM**

TYPE OF INVESTMENT  
LOCATION  
ECONOMIC CONTRIBUTION  
CONTRIBUTION TO EMPLOYMENT  
CONTRIBUTION TO INDIRECT EMPLOYMENT  
STATUS

**FOREIGN AFFILIATE**  
**BEIRUT**  
**USD 0.7 MILLION**  
**5**  
**10**  
**CLOSED**

## SECURE TELEPHONE & BANKING CARDS

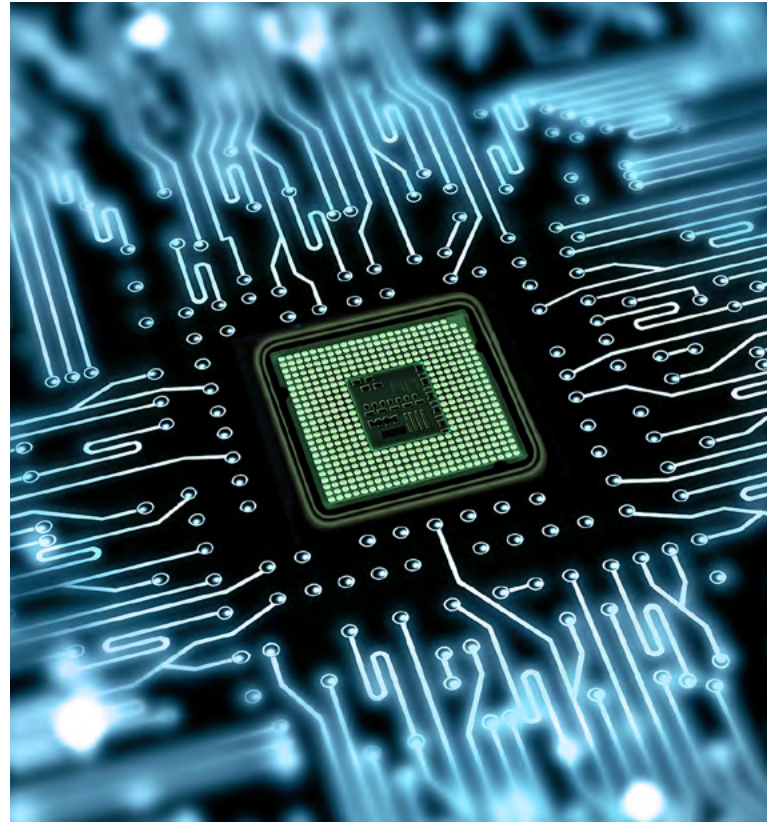
The company was established in 1973 as a security-printing house. It expanded to become an international provider of secure solutions to governments, telecom operators and financial institutions.

It specialized in the development, manufacturing and sales of smart cards and utility cards for value-added services to the banking, telecommunications and security sector.

It applied to IDAL in 2005 and started operations in 2006.

The project spans on a built up area of 1,500 sqm.

This project benefited from Investment Law 360 and completed the 10 years exemptions.



SECTOR  
SUB-SECTOR  
INVESTOR'S ORIGIN  
MAJOR SHAREHOLDER(S)

**TECHNOLOGY**  
**HIGH-TECH MANUFACTURING**  
**LEBANON**  
**HISHAM ITANI**

TYPE OF INVESTMENT  
LOCATION  
ECONOMIC CONTRIBUTION  
CONTRIBUTION TO EMPLOYMENT  
CONTRIBUTION TO INDIRECT EMPLOYMENT  
STATUS

**GREENFIELD**  
**MOUNT LEBANON, ALEY, BCHAMOUN**  
**USD 21.1 MILLION**  
**252**  
**504**  
**OPERATIONAL**

## DIAMOND SEGMENTS & TOOLS MANUFACTURING UNIT

A project developed by MG International Diamond Tools in 2002 in 'Ain Saadeh, Mount Lebanon. The manufacturing unit, with a built-up area of 1,500 sqm requires a highly-qualified labor force of around 25 engineers and technicians, and the production process is fully automated. While an estimated 95% of the production is exported to nearly 55 countries, including Germany, France, Italy, Switzerland and the USA, the manufacturing unit still has a positive impact on the Lebanese market by providing high-quality products at lower cost.

It applied to IDAL in 2004 and started operations on the same year.

The project spans on a built up area of 1,500 sqm.

This project benefited from Investment Law 360 and completed the 10 years exemptions.



SECTOR  
SUB-SECTOR  
INVESTOR'S ORIGIN  
MAJOR SHAREHOLDER(S)

**TECHNOLOGY**  
**HIGH-TECH MANUFACTURING**  
**LEBANON**  
**FAHD AL AYYAF / FAHD AL HARBI**  
**KAMAL NAHAS / ANTOINE NAHAS**  
**MICHELE NAHAS SARKIS / JOSEPH SARKIS**

TYPE OF INVESTMENT  
LOCATION  
ECONOMIC CONTRIBUTION  
CONTRIBUTION TO EMPLOYMENT  
CONTRIBUTION TO INDIRECT EMPLOYMENT  
STATUS

**GREENFIELD**  
**MOUNT LEBANON, METN, AIN SAADEH**  
**USD 1.9 MILLION**  
**43**  
**86**  
**OPERATIONAL**



# TELECOMMUNICATON



## ERICSSON GLOBAL SERVICE DELIVERY CENTER

The Ericsson Global Service Delivery Center provides technology services to telecom providers. During the first stage of the project, 100 job opportunities in engineering and technology, as well as in management, were created. Today, the Center, which employs a total of 221 people, hopes to attract other companies providing similar services, thus contribute to boosting the competitiveness of Lebanon in the area of technology and telecommunications.

It applied to IDAL in 2007.

The project spans on a built up area of 3,080 sqm.



SECTOR	TELECOMMUNICATION
SUB-SECTOR	SERVICES
INVESTOR'S ORIGIN	SWEDEN
MAJOR SHAREHOLDER(S)	ERICSSON S.A. ERICSSON FRANCE S.A.
TYPE OF INVESTMENT	FOREIGN AFFILIATE
LOCATION	BEIRUT
ECONOMIC CONTRIBUTION	USD 630,000 THOUSAND
CONTRIBUTION TO EMPLOYMENT	100
CONTRIBUTION TO INDIRECT EMPLOYMENT	250
STATUS	CLOSED

## BROADBAND WIRELESS INTERNET

Cedarcom Group, established in 1997, is a group that includes Mobi, the leading Internet Service Provider (ISP) in Lebanon and Broadband Wireless Data Operator licensed to deploy and operate wireless data networking and last-mile solutions throughout Lebanon. In 2006, Cedarcom Broadband intended to expand and establish a wireless network ("The Network") with the aim of offering "wireless ADSL" services in Lebanon.

It applied to IDAL in 2006 and started operations in the same year.

This project benefited from Investment Law 360 and completed the 10 years exemptions.



SECTOR  
SUB-SECTOR  
INVESTOR'S ORIGIN  
MAJOR SHAREHOLDER(S)

**TELECOMMUNICATION  
NETWORK SERVICES  
LEBANON  
CEDARCOM HOLDING  
IMAD TARABAY  
MAHER EL TURK**

TYPE OF INVESTMENT  
LOCATION  
ECONOMIC CONTRIBUTION  
CONTRIBUTION TO EMPLOYMENT  
CONTRIBUTION TO INDIRECT EMPLOYMENT  
STATUS

**GREENFIELD  
BEIRUT  
USD 4.3 MILLION  
27  
67  
CLOSED**

# TOURISM



## THE FOREST

The Forest is a recreation park that lies entirely within the natural pine lands of Ain Saadeh. The park offers different recreational activities and instructional programs and is responsible for around 130,000 sqm of park land including: Outdoors swimming pool, two tennis court, health club ( that will include a spa and a gym), multiple restaurants areas, pubs and indoor and outdoor parking.

It applied to IDAL in 2017.



SECTOR  
SUB-SECTOR  
INVESTOR'S ORIGIN  
MAJOR SHAREHOLDER(S)

**TOURISM**  
**LEISURE & RECREATION PARKS**  
**LEBANON**  
**WILLIAM ZARD ABOU JAOUDE /**  
**PAULINE WILLIAM ZARD**  
**FOREST SAL HOLDING / FADI WILLIAM ZARD**

TYPE OF INVESTMENT  
LOCATION  
ECONOMIC CONTRIBUTION  
CONTRIBUTION TO EMPLOYMENT  
CONTRIBUTION TO INDIRECT EMPLOYMENT  
STATUS

**GREENFIELD**  
**MOUNT LEBANON, MATN, AIN SAADEH**  
**USD 18 MILLION**  
**164**  
**246**  
**UNDER EXECUTION**



## KIDZMONDO

KidzMondo is a Lebanese concept designed to provide a complete solution for children, by offering a unique edutainment oriented indoor theme park created with the intention to amuse while simultaneously imparting knowledge.

KidzMondo is a certified active member of the IAAPA (International Association of Amusement Parks and Attractions) since August 2011.

It applied to IDAL in 2012 and started operations in 2013.

The new facilities stretch over 4,000 square meters of built-up area.



SECTOR	<b>TOURISM</b>
SUB-SECTOR	<b>LEISURE &amp; RECREATION PARKS</b>
INVESTOR'S ORIGIN	<b>LEBANON</b>
MAJOR SHAREHOLDER(S)	<b>ALI KAZMA HIND BERRY ALI AL-KHALIL</b>
TYPE OF INVESTMENT	<b>GREENFIELD</b>
LOCATION	<b>BEIRUT</b>
ECONOMIC CONTRIBUTION	<b>USD 18.1 MILLION</b>
CONTRIBUTION TO EMPLOYMENT	<b>74</b>
CONTRIBUTION TO INDIRECT EMPLOYMENT	<b>111</b>
STATUS	<b>OPERATIONAL</b>

## MANDARIN ORIENTAL

Mandarin Oriental Hotel Group will manage a new luxury hotel and branded residences currently under development in Beirut. The overall development comprises two adjacent buildings located in Beirut's Central District at the heart of Lebanon's capital. Mandarin Oriental will be situated in the south tower, with 280 well-appointed rooms and suites and 25 serviced apartments. All will be designed in a contemporary style, with exacting attention to detail that is reflective of the Group's oriental heritage. The north tower will house 103 Residences at Mandarin Oriental, that will provide the most luxurious and desirable living in central Beirut.

It applied to IDAL in 2010.

The new facilities will stretch over 63,201 sqm of built-up area.



SECTOR  
SUB-SECTOR  
INVESTOR'S ORIGIN  
MAJOR SHAREHOLDER(S)

**TOURISM**  
**HOTELS & RESORTS**  
**LEBANON - KSA**  
**BASHOURA HOLDING**

TYPE OF INVESTMENT  
LOCATION  
ECONOMIC CONTRIBUTION  
CONTRIBUTION TO EMPLOYMENT  
CONTRIBUTION TO INDIRECT EMPLOYMENT  
STATUS

**JOINT VENTURE**  
**BEIRUT**  
**USD 208 MILLION**  
**250**  
**375**  
**UNDER EXECUTION**

## VENDÔME EXPANSION

In 1974 the hotel became the responsibility of La Société Des Grands Hotels Du Liban, who had to cease operations in 1983 due to Lebanon's civil strife. A decade later, with the arrival of peace, several million dollars were invested in renovation and restoration, reviving this landmark legend to its former glory. In 1995 InterContinental Hotels and Resorts took on the management, and reopened its doors in November 1996.

Le Vendôme today has 73 rooms and suites equipped with the latest technology, gourmet restaurants and a 24-hour destination bar.

It planned on expanding the hotel and applied to IDAL in 2010.

The new facilities will stretch over 826 sqm of built-up area.



SECTOR  
SUB-SECTOR  
INVESTOR'S ORIGIN  
MAJOR SHAREHOLDER(S)

**TOURISM**  
**HOTELS & RESORTS**  
**LEBANON**  
**SOCIÉTÉ DES GRANDS HÔTELS DU LIBAN**  
**MAZEN SALHA / MARWAN SALHA**  
**CHARLES NOUJAIM**

TYPE OF INVESTMENT  
LOCATION  
ECONOMIC CONTRIBUTION  
CONTRIBUTION TO EMPLOYMENT  
CONTRIBUTION TO INDIRECT EMPLOYMENT  
STATUS

**EXPANSION**  
**BEIRUT**  
**USD 31.8 MILLION**  
**70**  
**105**  
**UNDER EXECUTION**



## SUMMERLAND KEMPINSKI HOTEL & RESORT

The project is the reconstruction of the former Summerland Beach Club. It is owned by the Societe Generale d'Enreprises Touristiques, a Saudi-Lebanese joint venture, and managed by Kempinski, Europe's oldest luxury hotel group. It holds 153 rooms.

It applied to IDAL in 2010 and started operations in 2015.

The project spans over a built up area of 65,000 sqm.



SECTOR  
SUB-SECTOR  
INVESTOR'S ORIGIN  
MAJOR SHAREHOLDER(S)

**TOURISM**  
**HOTELS & RESORTS**  
**LEBANON - KSA**  
**AL MASHARIH COMPANY HOLDING**  
**HRH MOTHEB BIN ABDALLAH BIN ABDULAZIZ**  
**AL WAHA INVESTMENT HOLDING**

TYPE OF INVESTMENT  
LOCATION  
ECONOMIC CONTRIBUTION  
CONTRIBUTION TO EMPLOYMENT  
CONTRIBUTION TO INDIRECT EMPLOYMENT  
STATUS

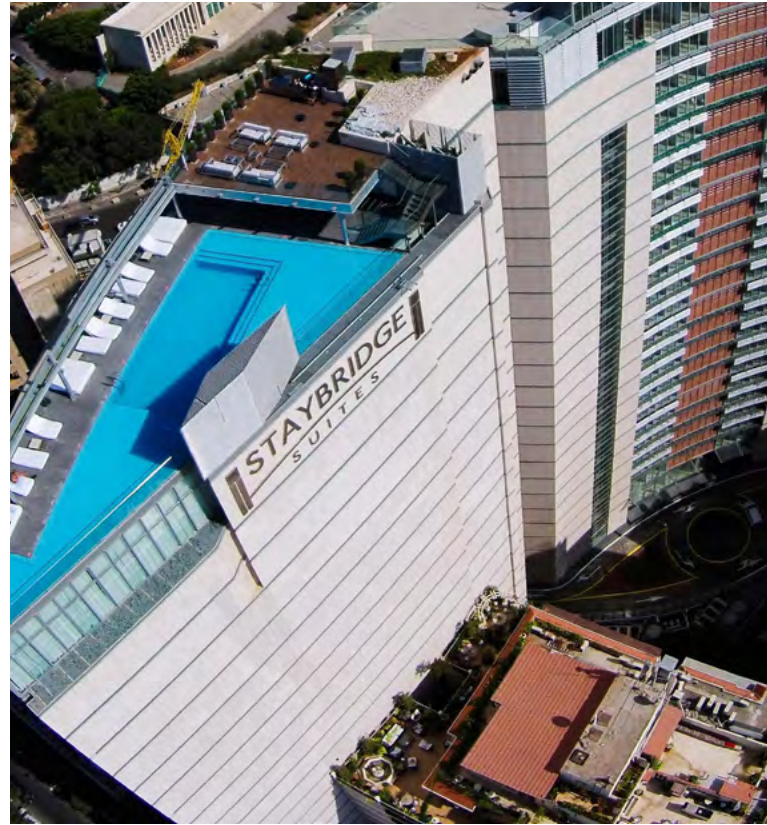
**FOREIGN AFFILIATE**  
**BEIRUT, JNAH**  
**USD 155.5 MILLION**  
**221**  
**331**  
**OPERATIONAL**

## STAYBRIDGE SUITES HOTEL

The Staybridge Suites Hotel is a five-star modern hotel, located in the bustling Verdun district in Beirut. It holds 80 suites.

It applied to IDAL in 2008 and started operations in 2013.

The new facilities stretch over 35,740 sqm of built-up area.



SECTOR  
SUB-SECTOR  
INVESTOR'S ORIGIN  
MAJOR SHAREHOLDER(S)

**TOURISM**  
**HOTELS & RESORTS**  
**LEBANON**  
**IRAD HOLDING**  
**JAMIL BAYRAM**  
**SAFI KALO**  
**ZEINA ABDO**

TYPE OF INVESTMENT  
LOCATION  
ECONOMIC CONTRIBUTION  
CONTRIBUTION TO EMPLOYMENT  
CONTRIBUTION TO INDIRECT EMPLOYMENT  
STATUS

**GREENFIELD**  
**BEIRUT**  
**USD 45.9 MILLION**  
**35**  
**52**  
**OPERATIONAL**

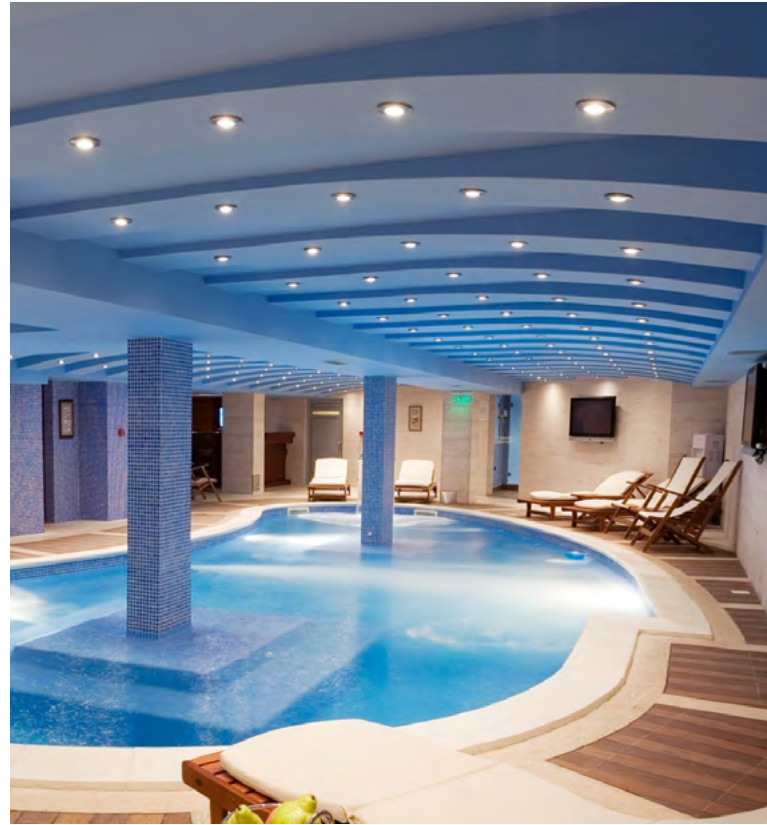


## SUNSET BEIRUT

Sunset Beirut is a tourism project consisting of an F&B and entertainment cluster. The project is located in Ramlet el Baida, Beirut, offering a new international trendy format of open air dining and entertainment for around 9,000 sqm of land which will include 13 restaurants, 10 kiosks, gym, kids area, gourmet shop, and 2 speciality shop.

It applied to IDAL in 2007.

The project spans on a built up area of 4,197 sqm.



SECTOR  
SUB-SECTOR  
INVESTOR'S ORIGIN  
MAJOR SHAREHOLDER(S)

**TOURISM**  
**LEISURE & RECREATION PARK**  
**LEBANON**  
**ADEL AHMAD KHALIL**  
**SABAH HAIDAR KHALIL**  
**NAJI SELIM NJEIM**

TYPE OF INVESTMENT  
LOCATION  
ECONOMIC CONTRIBUTION  
CONTRIBUTION TO EMPLOYMENT  
CONTRIBUTION TO INDIRECT EMPLOYMENT  
STATUS

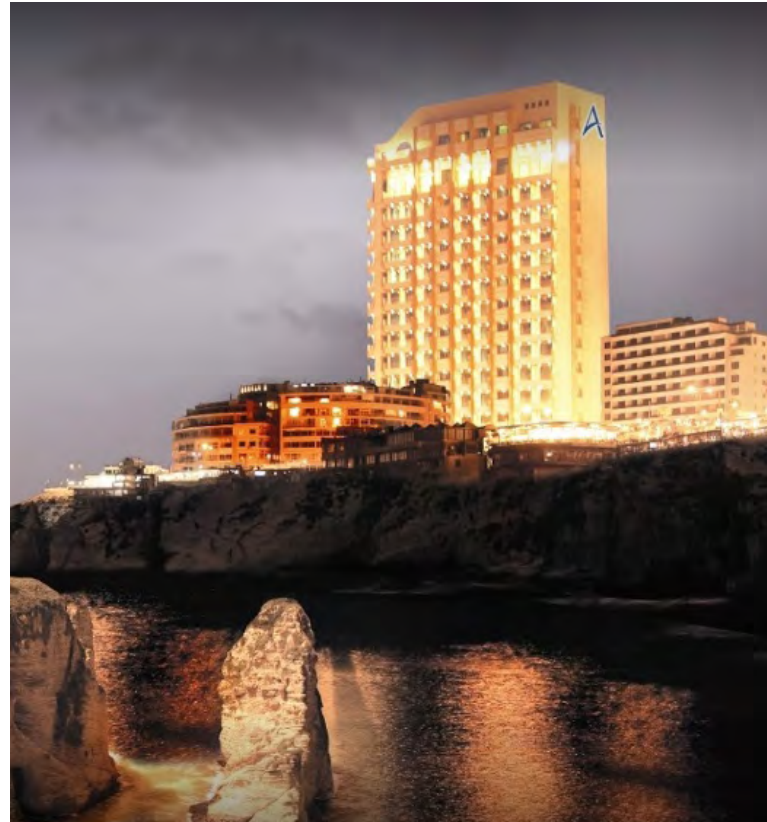
**GREENFIELD**  
**BEIRUT**  
**USD 37.2 MILLION**  
**481**  
**721**  
**UNDER EXECUTION**

## RAOUCHE ROTANA SUITES

Suite Hotel consisting of high quality 89 suites and 87 studios. Facilities include: meeting rooms, swimming pool, gymnasium, all day dining restaurant and café.

It applied to IDAL in 2006.

The project spans on a built up area of 17,159 sqm.



SECTOR  
SUB-SECTOR  
INVESTOR'S ORIGIN  
MAJOR SHAREHOLDER(S)

**TOURISM**

**HOTEL**

**LIBYA**

**REAL ESTATE DEVELOPMENT COMPANY S.A.L**

**REAL ESTATE IN FINANCIAL SERVICES COMPANY S.A.L.**

TYPE OF INVESTMENT  
LOCATION  
ECONOMIC CONTRIBUTION  
CONTRIBUTION TO EMPLOYMENT  
CONTRIBUTION TO INDIRECT EMPLOYMENT  
STATUS

**GREENFIELD**

**BEIRUT**

**USD 26.8 MILLION**

**175**

**262.5**

**CLOSED**

## BEIRUT WATERFRONT DEVELOPMENT

The Beirut Waterfront Development (BWD) is a joint venture between Solidere and Stow Waterfront.

The project, designed by Steven Holl in collaboration with Lebanese architect Nabil Gholam, comprises residential, commercial and recreational facilities around 12,000 sqm of fully-serviced, furnished units for sale. There will also be an 800-member yacht club and health & fitness center, in addition to 9,000 sqm. of commercial areas.

It applied to IDAL in 2005 and started operations in 2010.

The new facilities stretch over 20,364 sqm of built-up area.



SECTOR  
SUB-SECTOR  
INVESTOR'S ORIGIN  
MAJOR SHAREHOLDER(S)

**TOURISM**  
**HOTELS & RESORTS**  
**UK**  
**STOW WATERFRONT**  
**SOLIDERE**

TYPE OF INVESTMENT  
LOCATION  
ECONOMIC CONTRIBUTION  
CONTRIBUTION TO EMPLOYMENT  
CONTRIBUTION TO INDIRECT EMPLOYMENT  
STATUS

**GREENFIELD**  
**BEIRUT**  
**USD 80.9 MILLION**  
**381**  
**571**  
**OPERATIONAL**

## THE LANDMARK

The Landmark is a mixed use development project in downtown Beirut. Designed by renowned French architect Jean Nouvel, it will include a luxury hotel with serviced apartments, luxury apartments, a shopping mall, cinemas, and entertainment halls for children.

It applied to IDAL in 2005.

The new facilities will stretch over 46,285 sqm of built-up area.



SECTOR  
SUB-SECTOR  
INVESTOR'S ORIGIN  
MAJOR SHAREHOLDER(S)

**TOURISM**  
**HOTELS & RESORTS**  
**KUWAIT**  
**INGIFA**  
**HAMAD AL WAZZAN**  
**SOUAD AL-HAMIDI**  
**NASSIF KARAM**

TYPE OF INVESTMENT  
LOCATION  
ECONOMIC CONTRIBUTION  
CONTRIBUTION TO EMPLOYMENT  
CONTRIBUTION TO INDIRECT EMPLOYMENT  
STATUS

**FOREIGN AFFILIATE**  
**BEIRUT**  
**USD 126 MILLION**  
**336**  
**504**  
**SUSPENDED**



## GRAND HYATT HOTEL

The Grand Hyatt is a five-star luxury hotel, located in downtown. It will offer 350 rooms and suites, as well as meeting rooms, a business center, restaurants, a swimming pool, a health club, leisure facilities, and retail shops.

It applied to IDAL in 2005.

The new facilities will stretch over 65,000 sqm of built-up area.



SECTOR  
SUB-SECTOR  
INVESTOR'S ORIGIN  
MAJOR SHAREHOLDER(S)

**TOURISM**  
**HOTELS & RESORTS**  
**LEBANON - KSA**  
**KAAKI FAMILY / AL AMOUDI CO.**  
**BANKMED / KHALED AL-BARAHIN**  
**ABDUL AZIZ AL-BARAHIN / AMER BAJERI**

TYPE OF INVESTMENT  
LOCATION  
ECONOMIC CONTRIBUTION  
CONTRIBUTION TO EMPLOYMENT  
CONTRIBUTION TO INDIRECT EMPLOYMENT  
STATUS

**FOREIGN AFFILIATE**  
**BEIRUT**  
**USD 81.1 MILLION**  
**440**  
**660**  
**UNDER EXECUTION**



## JIYEH RESORT, BLUE ISLAND

Jiyeh Marina Resort occupies a prime site on the beachfront of the Jiyeh coast, mostly reputed for its crystal-clear blue sea.

At only few minutes from both Beirut and Sidon, this new and unique touristic resort is ideally designed to provide endless facilities, luxury, and comfort. It features a private beach, a pool, a gym, a spa and a shopping arcade.

It applied to IDAL in 2004.

The new facilities stretch over 43,285 sqm of built-up area.



SECTOR  
SUB-SECTOR  
INVESTOR'S ORIGIN  
MAJOR SHAREHOLDER(S)

**TOURISM**  
**HOTELS & RESORTS**  
**LEBANON**  
**MOHAMMAD SALEH**  
**MAHER SALEH**  
**ZAHIA SALED**

TYPE OF INVESTMENT  
LOCATION  
ECONOMIC CONTRIBUTION  
CONTRIBUTION TO EMPLOYMENT  
CONTRIBUTION TO INDIRECT EMPLOYMENT  
STATUS

**GREENFIELD**  
**MOUNT LEBANON, CHOUF, JIEH**  
**USD 21.1 MILLION**  
**214**  
**321**  
**SUSPENDED**

## FOUR SEASONS HOTEL

The Four Seasons Hotel is one of the first investment projects that were mediated by IDAL, located in downtown Beirut. It offers terraced hotel rooms, a rooftop lounge, a luxurious spa, and other state-of-the-art facilities. It holds 230 rooms.

It applied to IDAL in 2003 and started operations in 2010.

The new facilities stretch over 50,412 sqm of built-up area.



SECTOR  
SUB-SECTOR  
INVESTOR'S ORIGIN  
MAJOR SHAREHOLDER(S)

**TOURISM**  
**HOTELS & RESORTS**  
**KSA**  
**WALID BIN TALAL**

TYPE OF INVESTMENT  
LOCATION  
ECONOMIC CONTRIBUTION  
CONTRIBUTION TO EMPLOYMENT  
CONTRIBUTION TO INDIRECT EMPLOYMENT  
STATUS

**FOREIGN AFFILIATE**  
**BEIRUT**  
**USD 130.5 MILLION**  
**246**  
**369**  
**OPERATIONAL**

## LE GRAY

Le Gray Hotel is a luxurious and modern five-star hotel in the heart of Beirut. It offers 87 rooms and suites with a selection of restaurants.

It applied to IDAL in 2003 and started operations in 2009.

The project spans on a built up area of 32,990 sqm.



SECTOR  
SUB-SECTOR  
INVESTOR'S ORIGIN  
MAJOR SHAREHOLDER(S)

**TOURISM**  
**HOTELS & RESORTS**  
**LEBANON**  
**KABCHI FAMILY**  
**KLASSY FAMILY**  
**ABOUD FAMILY**  
**PIERRE ABOU JABER**

TYPE OF INVESTMENT  
LOCATION  
ECONOMIC CONTRIBUTION  
CONTRIBUTION TO EMPLOYMENT  
CONTRIBUTION TO INDIRECT EMPLOYMENT  
STATUS

**GREENFIELD**  
**BEIRUT**  
**USD 87.5 MILLION**  
**200**  
**300**  
**OPERATIONAL**

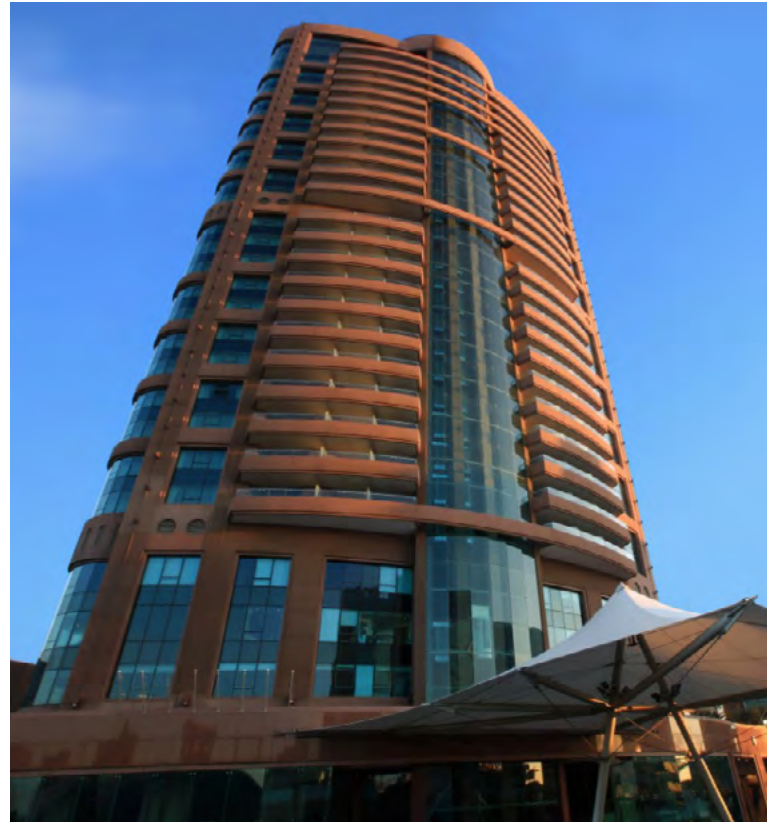
## METROPOLITAN CITY CENTER

Overlooking the city of Beirut, the Habtoor Grand Hotel Convention Center and Spa (managed today by Hilton Hotels & Resorts) was inaugurated a few years back and included a shopping mall, large multi-purpose hall with full banqueting facility and a suites hotel holding 151 guest rooms.

It applied to IDAL in 2003 and started operations in 2005.

The project spans on a built up area of 103,577 sqm.

This project benefited from Investment Law 360 and completed the 10 years exemptions.



SECTOR  
SUB-SECTOR  
INVESTOR'S ORIGIN  
MAJOR SHAREHOLDER(S)

**TOURISM**  
**HOTELS & RESORTS**  
**UAE**  
**KHALAF AHMAD AL HABTOOR**

TYPE OF INVESTMENT  
LOCATION  
ECONOMIC CONTRIBUTION  
CONTRIBUTION TO EMPLOYMENT  
CONTRIBUTION TO INDIRECT EMPLOYMENT  
STATUS

**FOREIGN AFFILIATE**  
**MOUNT LEBANON, METN, SIL EL FIL**  
**USD 143.4 MILLION**  
**250**  
**375**  
**OPERATIONAL**



## HILTON BEIRUT

This five-star hotel is to be located at the heart of downtown Beirut and is expected to employ more than 200 people in direct jobs and 400 people in indirect jobs.

It applied to IDAL in 2003.

It has an estimated size of 23,000 sqm in the prime downtown area.



SECTOR  
SUB-SECTOR  
INVESTOR'S ORIGIN  
MAJOR SHAREHOLDER(S)

**TOURISM**  
**HOTELS & RESORTS**  
**LEBANON - IRAQ**  
**GENERAL TOURISM HOLDING**  
**NAZMI OUJI**

TYPE OF INVESTMENT  
LOCATION  
ECONOMIC CONTRIBUTION  
CONTRIBUTION TO EMPLOYMENT  
CONTRIBUTION TO INDIRECT EMPLOYMENT  
STATUS

**FOREIGN AFFILIATE**  
**BEIRUT, DOWNTOWN**  
**USD 46 MILLION**  
**209**  
**313**  
**OPERATIONAL**



## METROPOLITAN PARK "HABTOOR LAND"

"Habtoor Land" is the largest theme park in Lebanon. The project features a miniature park, a roller-coaster, a souk, a bird park, a food court, an amphitheater, a ballroom and many other attractions.

It applied to IDAL in 2003.

The project spans on a built up area of 107,000 sqm.



SECTOR  
SUB-SECTOR  
INVESTOR'S ORIGIN  
MAJOR SHAREHOLDER(S)

**TOURISM**  
**RECREATIONAL PARK**  
**UAE**  
**KHALAF AHMAD AL HABTOOR**

TYPE OF INVESTMENT  
LOCATION  
ECONOMIC CONTRIBUTION  
CONTRIBUTION TO EMPLOYMENT  
CONTRIBUTION TO INDIRECT EMPLOYMENT  
STATUS

**GREENFIELD**  
**MOUNT-LEBANON, BAABDA, JAMHOUR**  
**USD 27.5 MILLION**  
**222**  
**333**  
**CLOSED**